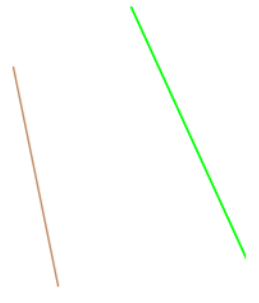
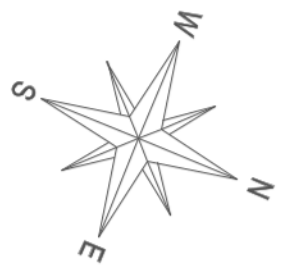
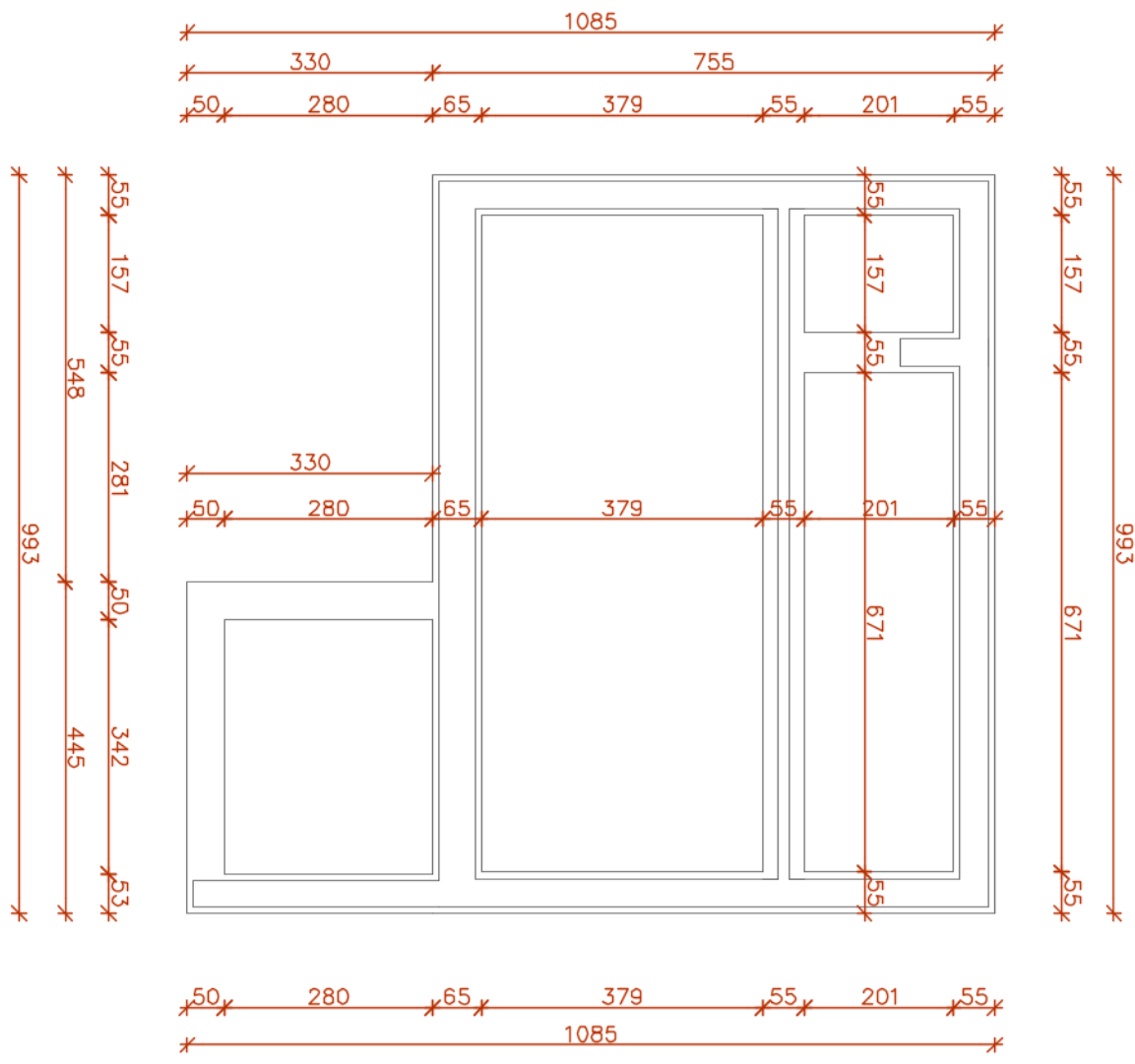
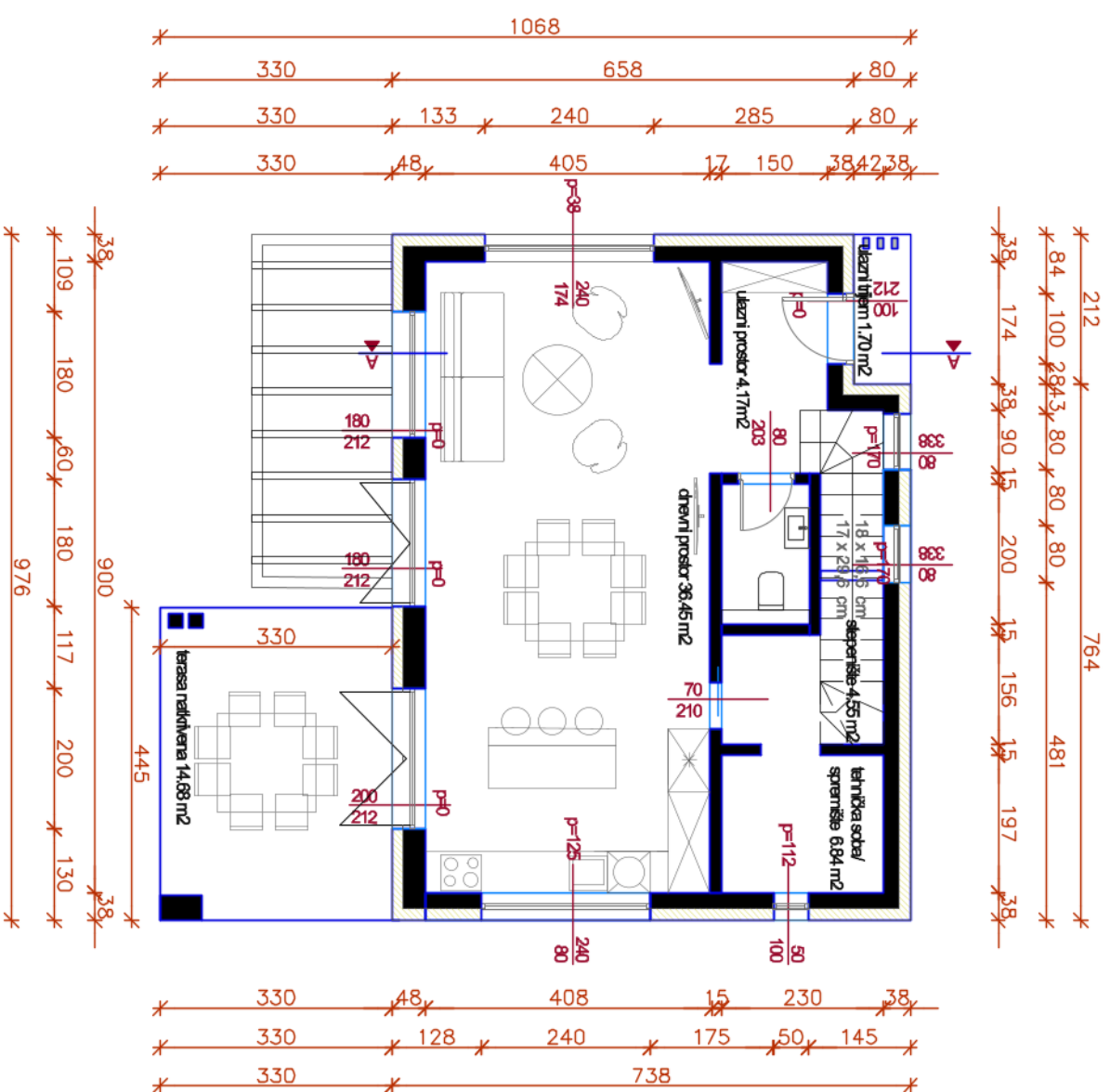
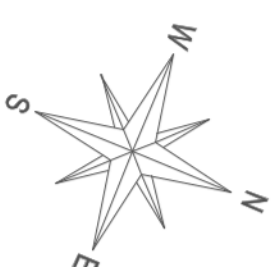


**AK 90.75=0.00**

OZELENJENA POVRŠINA 40%  
KIG: 0.14, KIS: 0.23  
ŠIRINA FRONTE GRADEVINSKE PARCELE U PODRUČJU  
GRADEVINSKOG PRAVCA 29.71 M  
ŠIRINA FRONTE GRADEVINSKE PARCELE U PODRUČJU  
REGULACIJSKE LINIJE 3 M  
POVRŠINA IZNOSI 606 M<sup>2</sup>





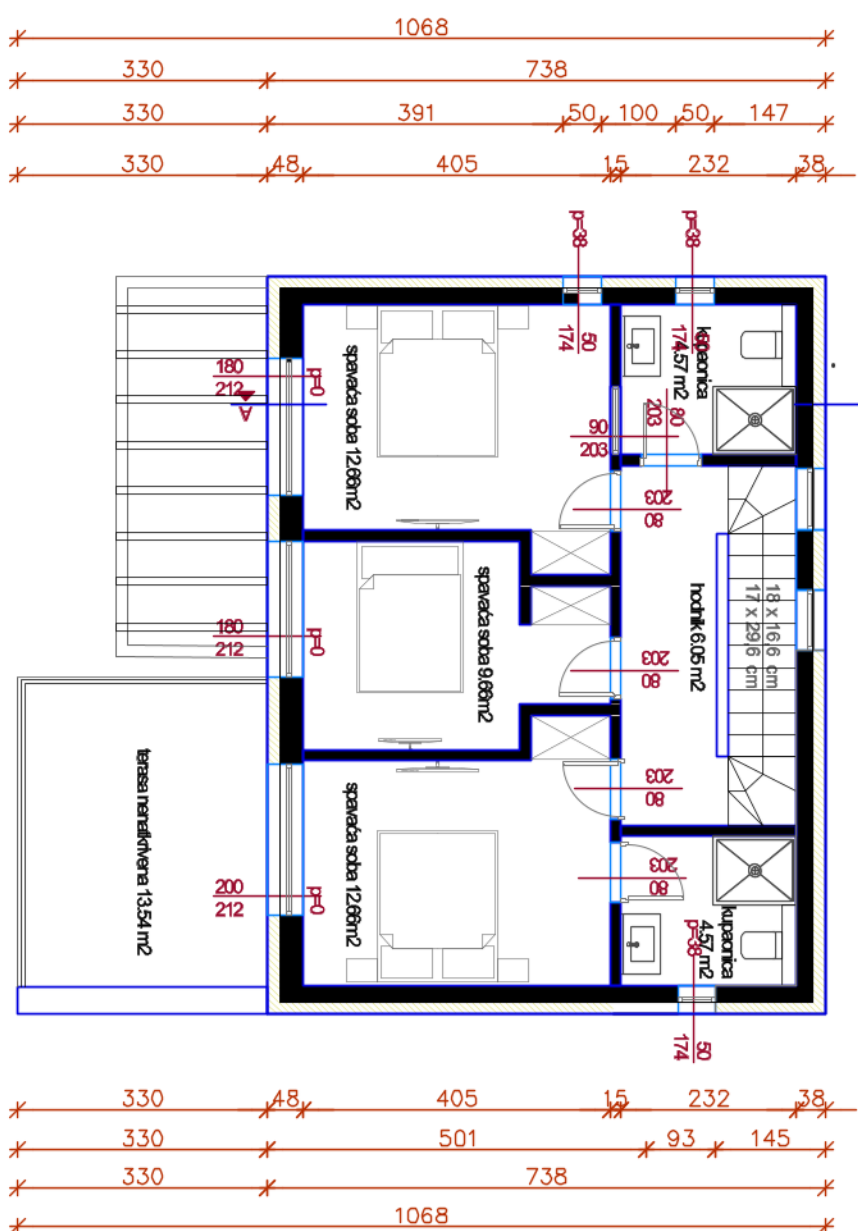
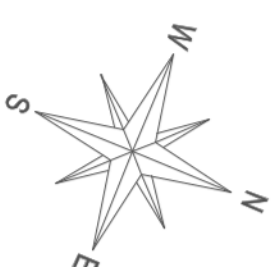
ZGRADENOST\_ TLOCRTNA PROJEKCIJA 86,71 M<sup>2</sup>  
 BRUTO POUŠIŠINA PRIZEMLJA 70,23 M<sup>2</sup>

NETO POUŠIŠINA PRIZEMLJA  
 ZATVORENI PROSTORI 54,51 M<sup>2</sup>

- ulazni prostor 4,17 m<sup>2</sup>
- wc 2,50 m<sup>2</sup>
- stopenišče 4,55 m<sup>2</sup>
- tehniška soba/  
sparnišče 6,84 m<sup>2</sup>
- dnevni prostor 36,45 m<sup>2</sup>

NETO POUŠIŠINA PRIZEMLJA  
 OTVORENI NATKRIVENI PROSTORI 13,56 M<sup>2</sup>

terasa natkrivena 14,68 m<sup>2</sup>



**BRUTO POKRŠINA KATA 72.03 M<sup>2</sup>**

**NETO POKRŠINA KATA  
ZATVORENI PROSTORI 50,17 M<sup>2</sup>**

hodnik 6,05 m<sup>2</sup>

kupaonica 4,57 m<sup>2</sup>

spavaća soba 12,66m<sup>2</sup>

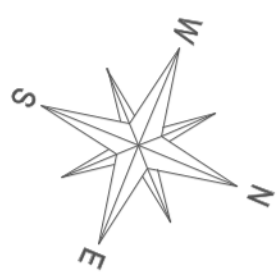
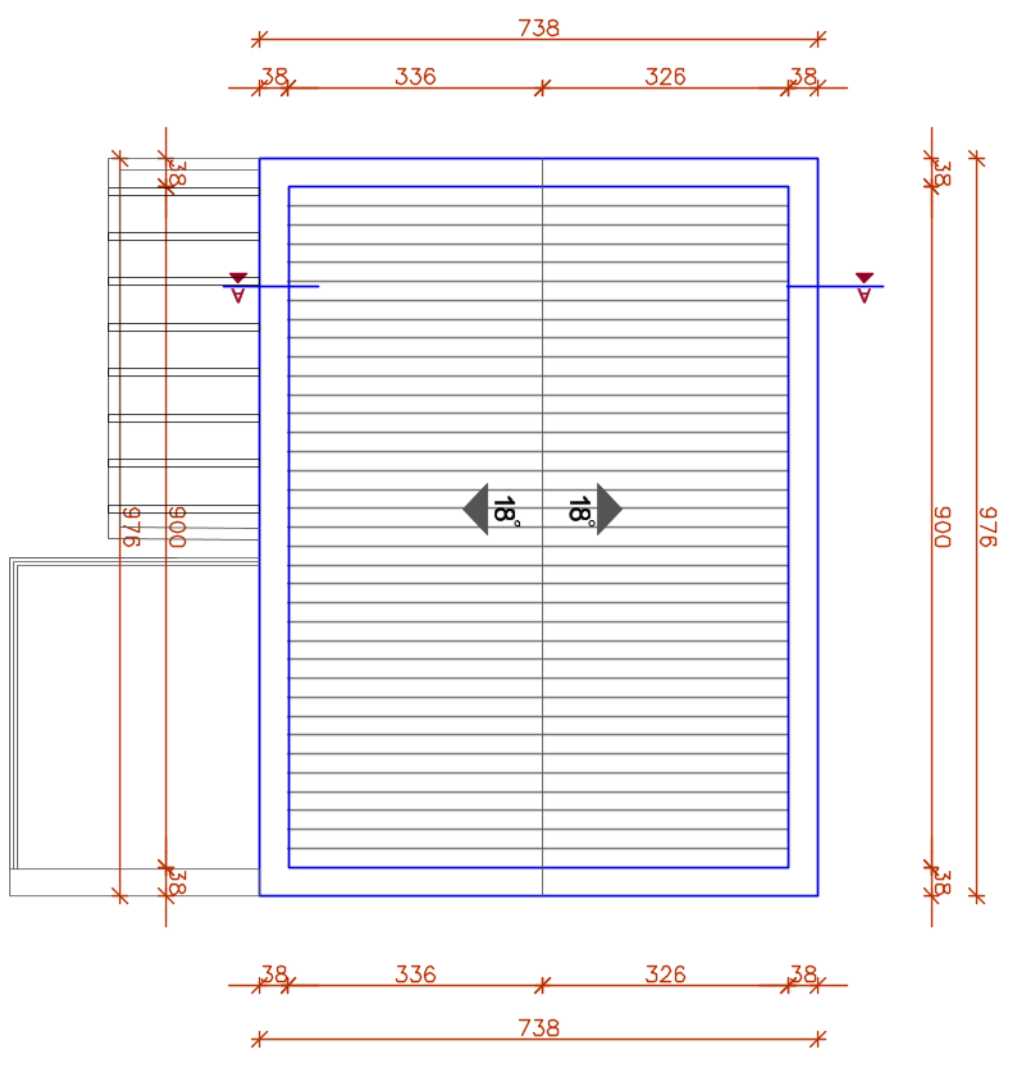
spavaća soba 9,66m<sup>2</sup>

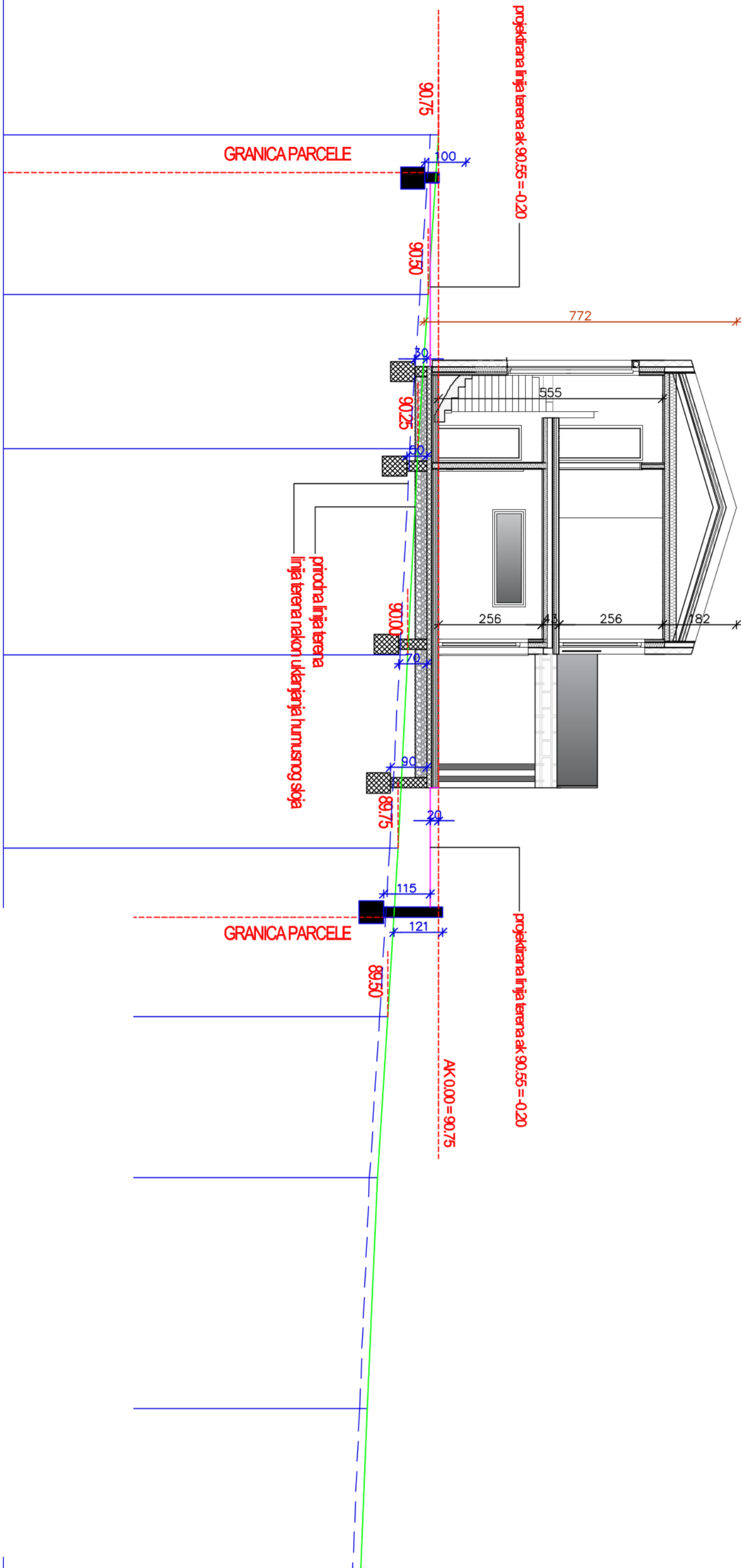
spavaća soba 12,66m<sup>2</sup>

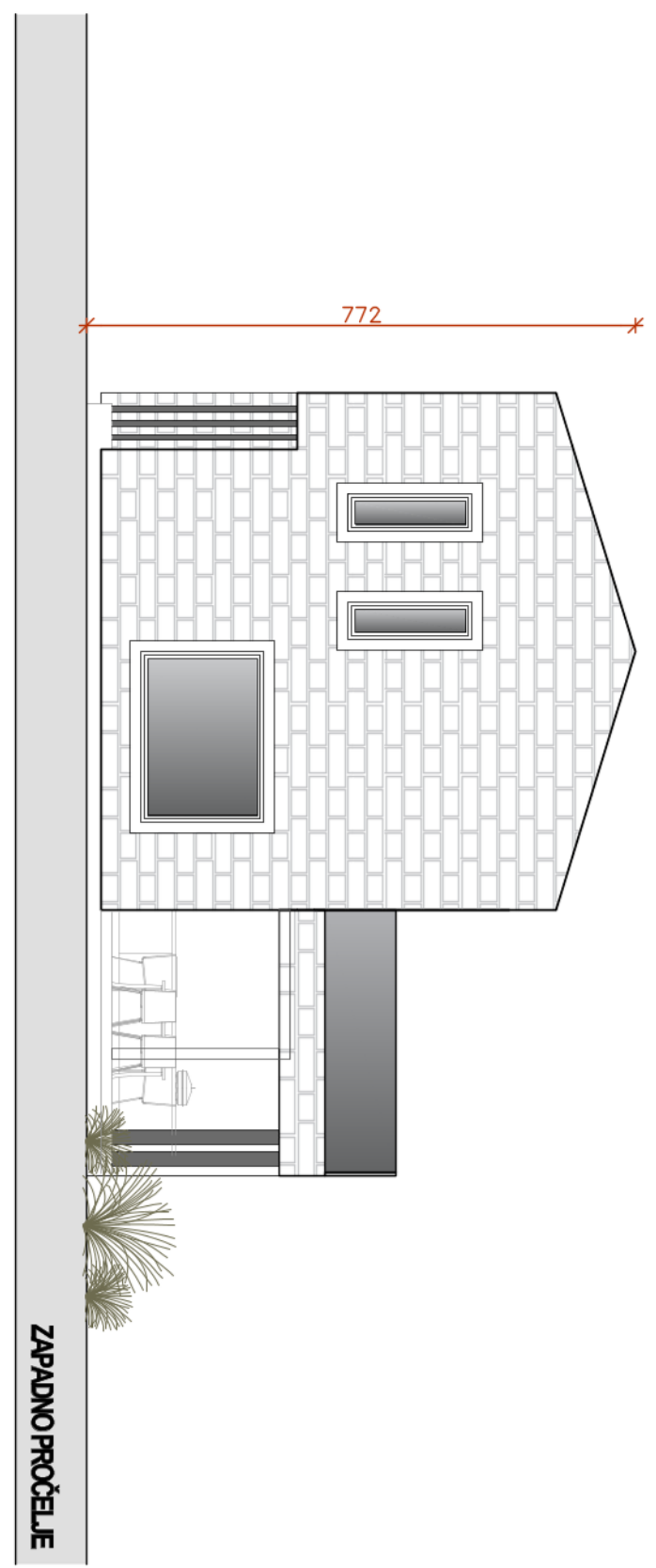
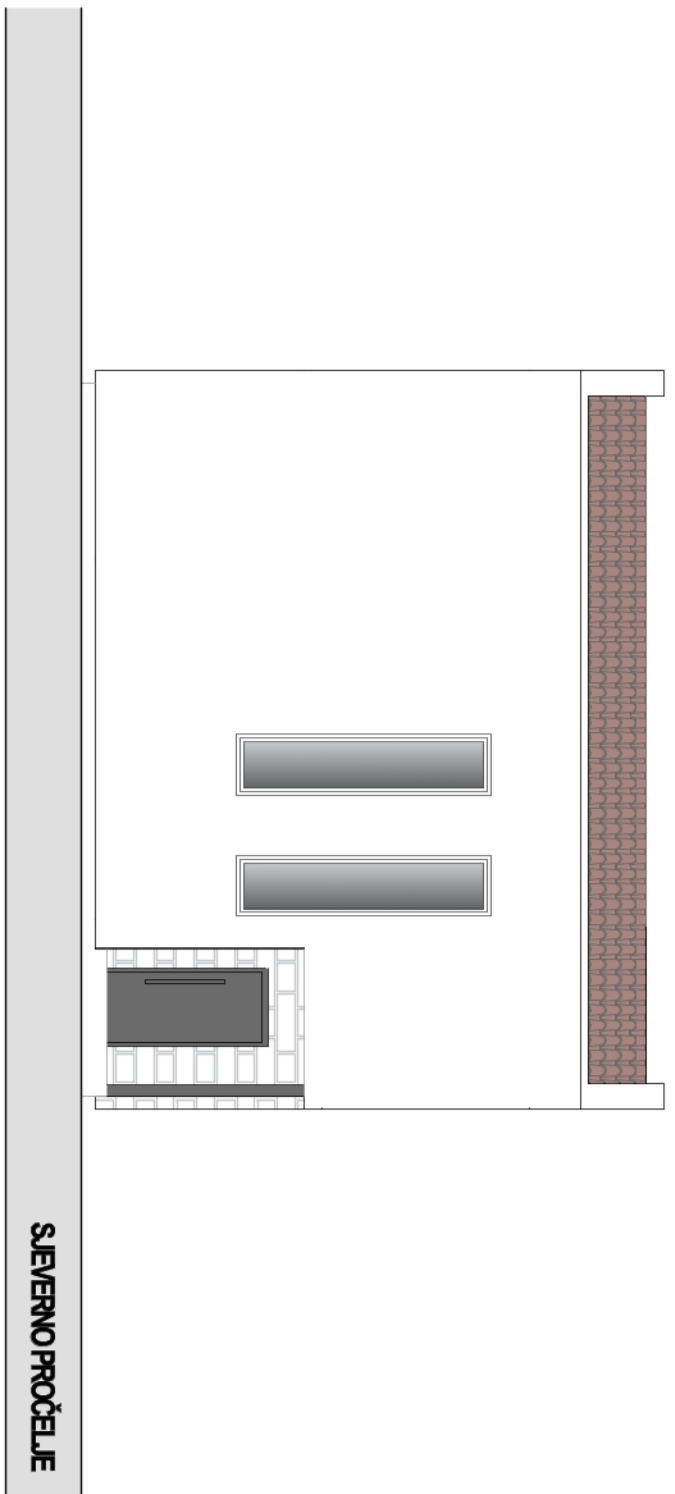
kupaonica 4,57 m<sup>2</sup>

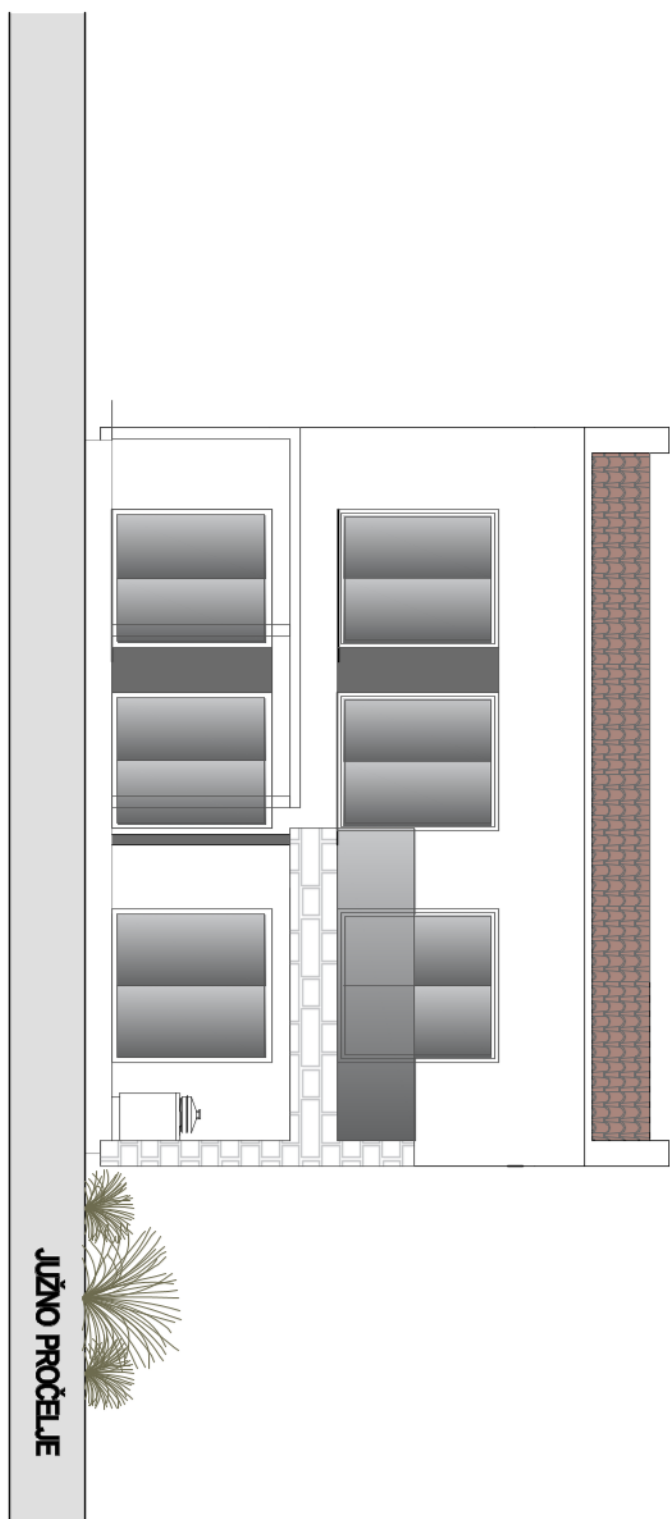
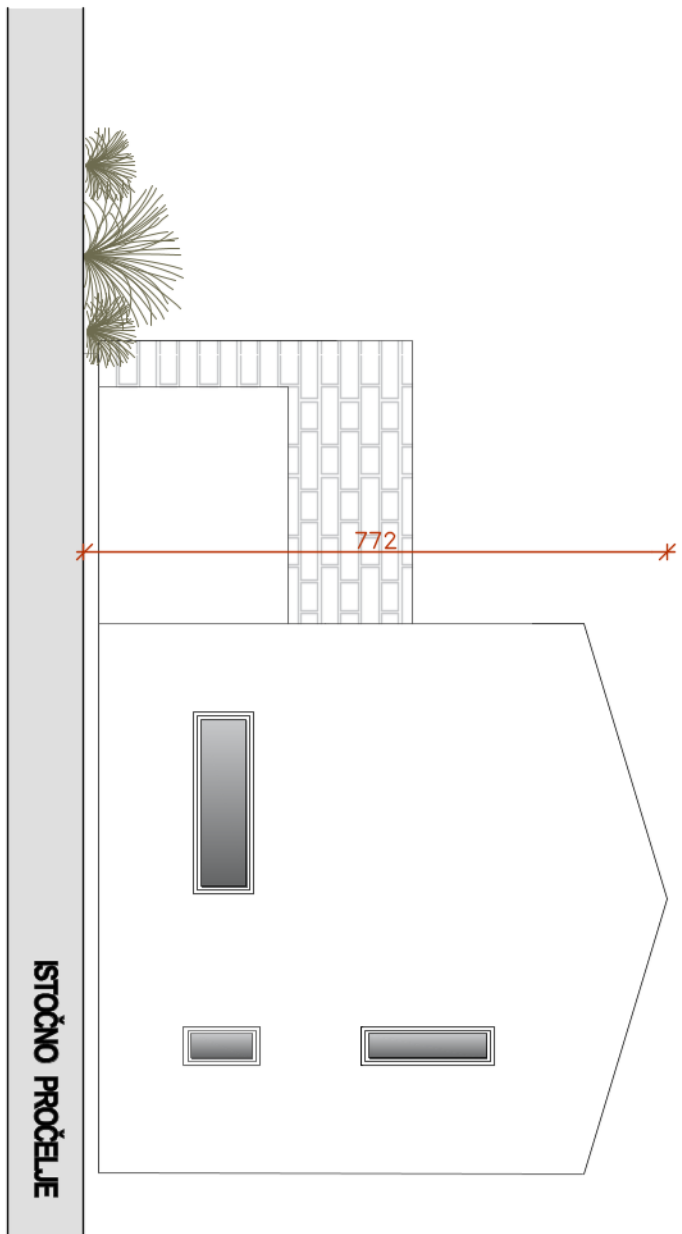
**NETO POKRŠINA KATA  
OTVORENI NE NATKRIVENI PROSTORI 13,54 M<sup>2</sup>**

terasa nenatkrivena 13,54 m<sup>2</sup>

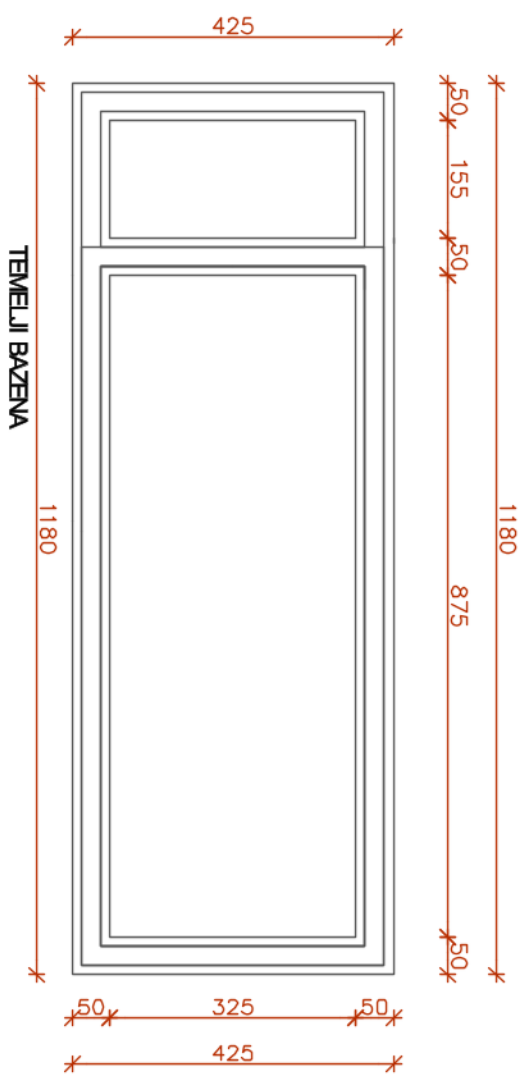
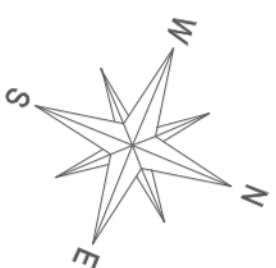




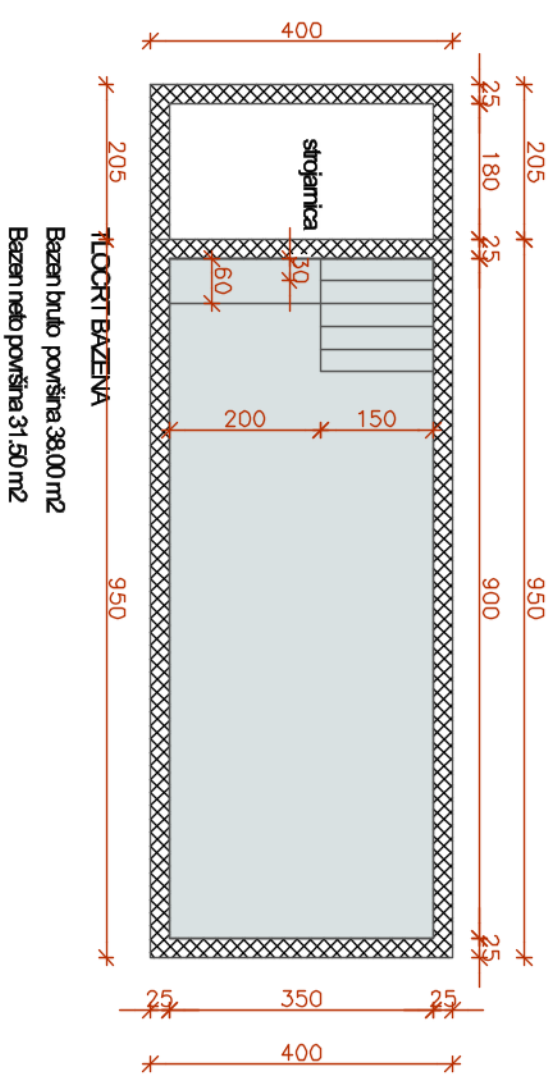
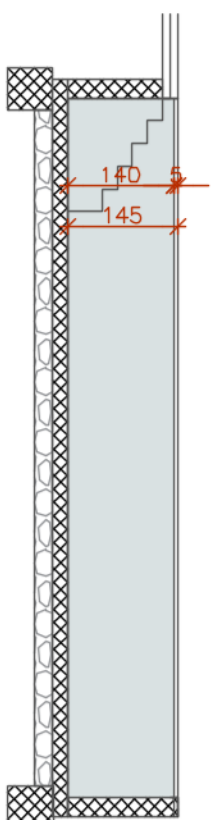








PRESJEK BAZENA



Bazen bruto površina 38,00 m<sup>2</sup>  
Bazen neto površina 31,50 m<sup>2</sup>